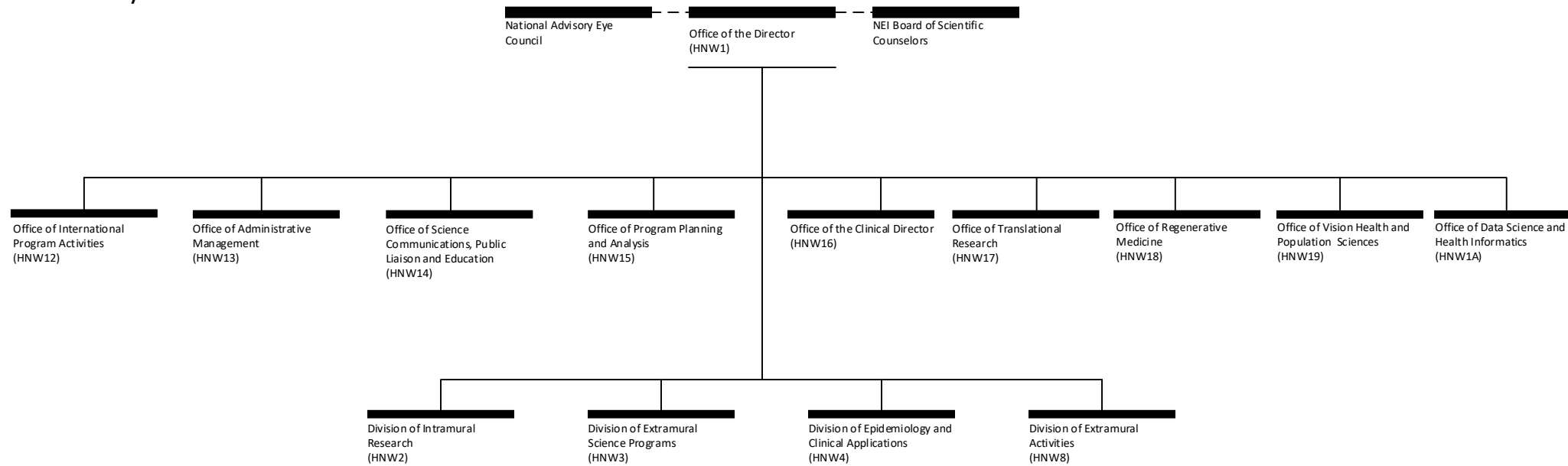


# National Eye Institute



Conducts, fosters, and supports research on the causes, natural history, prevention, diagnosis, and treatment of disorders of the eye and visual system, and in related fields (including rehabilitation) through:

- Research performed in its own laboratories and through contracts;
- A program of research grants, individual and institutional research training awards;
- Cooperation and collaboration with voluntary organizations and other institutions engaged in research and training in the special health problems of the blind;
- The direction of the National Eye Health Education Program; and
- Collection and dissemination of information on research and findings in these areas.

# National Eye Institute

National Advisory Eye Council

Office of the Director (HNW1)

NEI Board of Scientific Counselors

Office of Administrative Management (HNW13)

Extramural Administrative Management Branch (2)

Financial Management Branch (3)

Information and Technology Management Branch (6)

Management Policy and Analysis Branch (7)

Intramural Administrative Management Branch (8)

Office of International Program Activities (HNW12)

Office of Science Communications, Public Liaison and Education (HNW14)

Science Communications Branch (2)

Public Liaison and Education Branch (3)

Office of Program Planning and Analysis (HNW15)

Strategic Planning and Initiatives Branch (2)

Program Evaluation, Analysis and Reporting Branch (4)

Office of the Clinical Director (HNW16)

Consult Services Section (HNW162)

Professional Services Section (HNW163)

Clinical Operations Branch (HNW164)

Clinical Services Section (2)

Imaging Services Section (3)

Clinical Trials Coordinating Section (4)

Clinical Informatics Section (5)

Office of Translational Research (HNW17)

Office of Regenerative Medicine (HNW18)

Office of Vision Health and Population Sciences (HNW19)

Office of Data Science and Health Informatics (HNW1A)

Veterinary Research and Resources Section (-2)

Molecular Structure and Functional Genomics Section (-3)

Imaging Core Unit (-9)

Division of Intramural Research (HNW2)

Flow Cytometry Core (-C)

Histology Core (-D)

Genetic Engineering Core (-E)

Ocular Gene Therapy Core (-H)

Retinal Neurophysiology Section (-J)

Visual Function Core (-L)

Division of Extramural Science Programs (HNW3)

Division of Epidemiology and Clinical Applications (HNW4)

Clinical Trials Branch (3)

Unit on Clinical Investigation of Retinal Disease (1)

Biostatistics Branch (4)

Statistical Methods and Analysis Section (2)

Division of Extramural Activities (HNW8)

Scientific Review Branch (2)

Grants Management Branch (3)

Neurobiology, Neurodegeneration, and Repair Laboratory (HNW21)

Retinal Development, Genetics and Therapy Section (2)

Retinal Cell Biology and Degeneration Section (3)

Retinal Circuit Development and Genetics Unit (4)

Ophthalmic Genetics and Visual Functions Branch (HNW22)

Ophthalmic Clinical Genetics Section (2)

Human Visual Function Core (4)

Ophthalmic Molecular Genetics Section (7)

Pediatric, Developmental, and Genetic Ophthalmology Section (8)

Ocular and Stem Cell Translational Research Section (9)

Ophthalmic Genomics Laboratory (A)

Clinical and Translational Imaging Unit (C)

Medical Genetics and Ophthalmic Genomics Unit (D)

Translational Research Core (E)

Laboratory of Sensorimotor Research (HNW24)

Section on Perception, Cognition and Action (3)

Neural Modeling Section (5)

Neuronal Networks Section (7)

Vision Section (8)

Eye Movements and Visual Selection Section (A)

Unit on Visual Decision Making (B)

Laboratory of Immunology (HNW27)

Clinical Immunology Section (2)

Immunoregulation Section (3)

Experimental Immunology Section (4)

Immunopathology Section (6)

Molecular Immunology Section (9)

Clinical and Translational Immunology Unit (A)

Laboratory of Retinal Cell and Molecular Biology (HNW28)

Molecular Mechanisms Section (6)

Mechanisms of Retinal Diseases Section (7)

Protein Structure and Function Section (8)

Retinal Ganglion Cell Biology Section (9)

Neuronal-Glial Interactions in Retinal Disease Unit (A)

Neuro-Immune Regulome Unit (HNW2A)